

SHARON BUTLER TWO COATS OF PAINT

May 6, 2013

Careful observation: Scars, skin and larger body parts

8:03 AM Sharon Butler

0



Edie Nadelhaft

Garis & Hahn, a self-styled Kunsthalle that opened earlier this year near the New Museum on the Bowery, recently presented breathtakingly well-observed work by Gwen Hardie, Cynthia Lin and Diana Schmertz in an exhibition called "Borderline: Depictions of Skin." Here are a few images from the show.

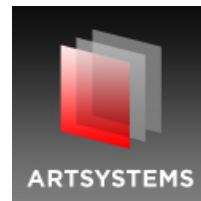


Diana Schmertz paints detached hands and body parts. The paintings are particularly haunting after the Boston Marathon bombing.



To advertise on TWO COATS OF PAINT via Nectar Ads, click [HERE](#).

TWO COATS ONLINE





Diana Schmertz



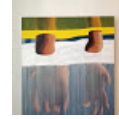
Gwen Hardie uses seductive old master technique to paint details of the body in a tondo format. For Hardie, skin serves as "a diaphanous membrane between the inner and outer world." In the basement, she installed a project comprising wall paper with miniature paintings printed on it and small glass marbles, with tiny paintings inside them, strewn about the floor.



Popular Posts

Two Coats Archive

POPULAR POSTS



SNAPS: Marie Walsh Sharpe Foundation Open Studios

Originally in Tribeca and now located in DUMBO, the Marie Walsh Sharpe Studio Program has been granting free studio space to visual artist...



SNAPS: Open Studios at ISCP

Founded in 1994, the International Studio & Curatorial Program (ISCP) in East Williamsburg is a residency-based contemporary art institu...



Frieze: Unprimed immediacy

Since the early days of Color Field painting, working on unprimed canvas or linen has given the impression of a certain unfinished immediac...



Surprise appearance at Frieze: Bernard Piffaretti

At Frieze New York yesterday, in the densely hung Galerie Frank Elbaz booth, I stumbled upon two fantastic paintings by Bernard Piffar...



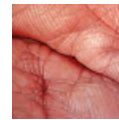
William Beckman's life studies at Forum

With a surgeon's attention to detail, William Beckman depicts the people and places closest to him: his family, his first home, a...



EMAIL: Tony Fitzpatrick "really, no shit"

Known for his retro drawing-collages and inspired storytelling, Tony Fitzpatrick has two shows up through May 26, "The Other Kind &qu...



Careful observation: Scars, skin and larger body parts

Edie Nadelhaft Garis & Hahn, a self-styled Kunsthalle that opened earlier this year near the New Museum on the Bowery, recently pre...



Monumental kitsch?

I was taken aback by Nabil Nahas's recent show of large, crusty abstract paintings at Sperone Westwater last week, particularly the ...



Juan Alonso's journey

"Juan Alonso: Grey Matters," Francine Seders Gallery, Seattle, WA. Through Nov. 28. Regina Hackett in the Seattle Post-Intelli...

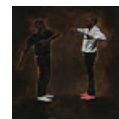
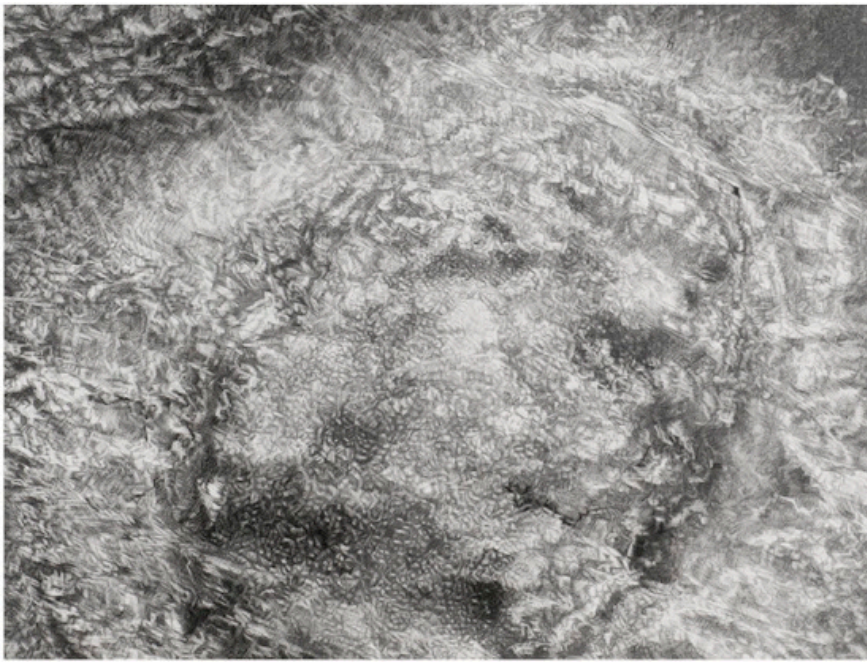


Figure painter Lynette Yiadom-Boakye is a finalist for the Turner Prize

The recently announced shortlist for Tate Britain's 2013 Turner Prize includes painter Lynette Yiadom-Boakye (London, b. 1977), who rea...



In Cynthia Lin's large scale graphite and charcoal drawings (image above: *Crop5aNBurn721*, 2010, graphite on paper, 31 x 41 inches.), scabs and scars attest to traumas survived. At close range, the images seem to be drawn from pixelated digital reference, suggesting that Lin is also questioning the reality and remove created by our digital personae.

The show is terrific, but I'd like to suggest one more artist working in an LES studio not far from the gallery, who might have been included: [Edie Nadelhaft](#). Like the other artists in "Borderline," Nadelhaft has the startling, jaw dropping ability to observe carefully and at close range, although she herself thinks of the images as abstract. Work from Nadelhaft's ceramic series "[Better Living Through Chemistry](#)" is featured this month in "[Femalenergy 3](#)," a group show at Woodward Gallery on the Lower East Side. Image at top of post: Edie Nadelhaft, *Flesh Field No. 2*, 2011, oil on canvas, 24 x 24 inches.

"[Femalenergy 3](#)," Artists include Susan Breen, Deborah Claxton, Vicki DaSilva, Natalie Edgar, Sabina Forbes II, Phyllis Gay Palmer, Sybil Gibson, Sonne Hernandez, Elisa Jensen, Luisa Mesa, Edie Nadelhaft, Klari Reis, Jo Ellen Van Ouwkerk, Cristina Vergano, and Lucy Wilner. Woodward Gallery, Lower East Side, New York, NY. Through June 30, 2013.

"[Borderline: Depictions of Skin](#)," artists include Gwen Hardie, Cynthia Lin, Diana Schmertz. Garis & Hahn Gallery, Lower East Side, New York, NY. Through April 27, 2013. (Say hello to Ray for me.)

Stay in touch: Receive Two Coats of Paint's [DAILY POSTS](#) via email and subscribe to the new [WEEKLY UPDATE](#).

Posted in:

[Recommend this on Google](#)

[Newer Post](#)

[Home](#)

[Older Post](#)

0 comments:

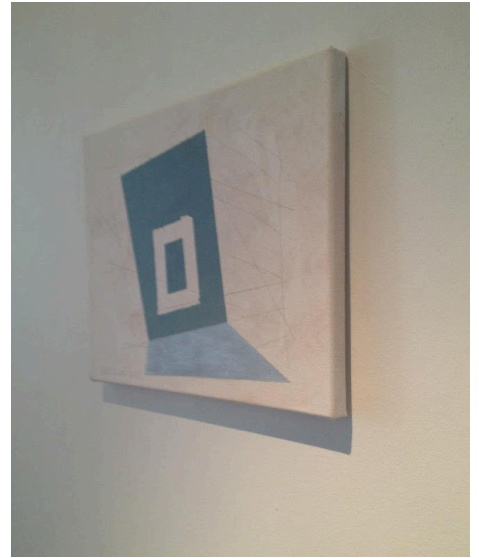
[Post a Comment](#)

SUBSCRIBE VIA EMAIL

Email address...

Submit

EMERGENCE: REDUCTIVE ABSTRACTION IN PARIS



[Click image for details](#)

NEW BOOK FROM TWO COATS OF PAINT PRESS



[Click image for more details](#). All sales support Two Coats of Paint.

TWO COATS ON TWITTER



Sharon Butler
TwoCoats

TwoCoats Photo:
tumblr.co/Z2ZBZykwQotv
about 1 hour ago · [reply](#) · [retweet](#) · [favorite](#)

TwoCoats Photo: Outdoor shower, picnic table, charcoal grill
tumblr.co/Z2ZBZykwQTjF
about 1 hour ago · [reply](#) · [retweet](#) · [favorite](#)

TwoCoats Photo: Inland for the summer. Billings Lake.
tumblr.co/Z2ZBZykwPeHw
about 1 hour ago · [reply](#) · [retweet](#) · [favorite](#)

TwoCoats Argh, no. Please no.

@chrisusak
3 hours ago · reply · retweet · favorite

TwoCoats :) @chrisusak
3 hours ago · reply · retweet · favorite

TwoCoats Or, really, outward MT
@BDPNT: @TwoCoats Provisional
#painting is trickling upwards ?
(shameless link: bit.ly/10Ef7Nu)
5 hours ago · reply · retweet · favorite

TwoCoats LOVED RT @tatianaberg:
Carlos Bunga
[instagram.com/p/ZQsnCOWKKu/](https://www.instagram.com/p/ZQsnCOWKKu/)
5 hours ago · reply · retweet · favorite

TwoCoats @BDPNT So true. #painting
5 hours ago · reply · retweet · favorite



Join the conversation

TWO COATS NEW LIGHTWEIGHT BACKPACKS!



-----> 8 bucks includes shipping /Available now / Click image for details.

Sharing content

Two Coats of Paint is licensed under a Creative Commons Attribution - Noncommercial-No Derivative Works 3.0 United States License. Contact Sharon Butler via email for permission to use content beyond the scope of this license.